

QA1
GO DRIVE IT.



**QA1 64-70 FORD MUSTANG LOWER CONTROL ARM
INSTALLATION INSTRUCTIONS: 52702, 52704**

WELCOME TO QA1!

OUR COMMITMENT

Congratulations on your purchase of this high-quality QA1 64-70 Ford Mustang Lower Control Arm assembly. It is engineered to the highest standards, utilizes the finest materials, and is built with exceptional craftsmanship and attention to detail.

While we understand your eagerness to start your build, please remember that your safety is our utmost priority. Always use an approved and appropriately rated jack, jack stand, or automotive lift, and take all necessary safety precautions to ensure the job is completed safely and correctly.

Before you start, read and understand all instructions thoroughly. With hand tools and essential equipment, you can do the main assembly and setup of your new lower control arms in your home garage, but if you feel unsure of your abilities during the assembly or installation and need some help or have any uncertainties, please seek the assistance of a qualified mechanic or automotive repair shop.

If you have any product questions or need guidance, please don't hesitate to call and speak with QA1 technical support at 952-985-5675.

Remember, we're here to support you every step of the way and are committed to ensuring your assembly and installation process is successful and enjoyable. We wish you all the best!

BEFORE INSTALLATION

Before you begin the QA1 64-70 Ford Mustang Lower Control Arm installation, read and understand these instructions carefully. If instructions are not correctly followed, personal injury, equipment, or product damage can result.

Products that have been installed are not eligible for returns. To prevent mistakes, thoroughly read these instructions before you start the lower control arm assembly procedure.

Check your order as soon as possible upon delivery. QA1 has provided parts list tables and images, as shown on pages 4 and 5. Compare your order's contents against the tables. Call your authorized dealer immediately if you discover anything missing from your order.

This kit uses fasteners to assemble and install. Welding is not required.

It is important to wear the appropriate personal protective equipment (PPE). However, the responsibility does not end there. Follow the manufacturer's instructions for safe use when working with power tools, and be cautious and responsible in your work.

ABOUT THIS MANUAL

PURPOSE

These instructions outline the QA1 64-70 Ford Mustang Lower Control Arm kit.

This system is designed to work with only the QA1 64-70 Mustang Sway Bar.

ITS CONTENTS

The information that follows is described in this instruction set:

- Required tools and supplies.
- Safety, hazard, and warning rules.
- Product overview and included parts.
- Installation and the setup procedures required for use.

Pages with images will have paragraphs and sentences with callout numbers that refer to their respective images, steps, and parts.

Procedures, once described in the text, are generally not repeated. When it is necessary to refer to another procedure, the page and step reference will be given.

REQUIRED TOOLS AND SUPPLIES

- Floor Jack
- Jack Stands
- SAE Wrench Set
- SAE Socket Set
- Torque Wrench (lb-ft)
- Anti-Seize Lubricant

SAFETY FIRST

- Work on your vehicle in an appropriate location.
- Park your car on a level surface.
- Use wheel chocks to prevent vehicle roll.
- Check your owner's manual for the correct jack lift points.
- Always support your vehicle with jack stands.
- Wear personal protection like safety glasses, gloves, and a fine particle respirator mask.
- Never use compressed air to clean brake or metal grinding dust from the brake, suspension components, frame, or rear axle housing.
- Grind metal only in a well-ventilated area, and wear a respirator until the dust has settled and the work area air has been cleared.
- Dispose of damaged or old parts in accordance with local laws. Do not throw any hazardous waste in the trash.
- Follow the manufacturer's instructions for safe use when working with power tools, and be cautious and responsible in your work.

CONTENTS

QA1 LOWER CONTROL ARM..... 4-12

PARTS LIST 4

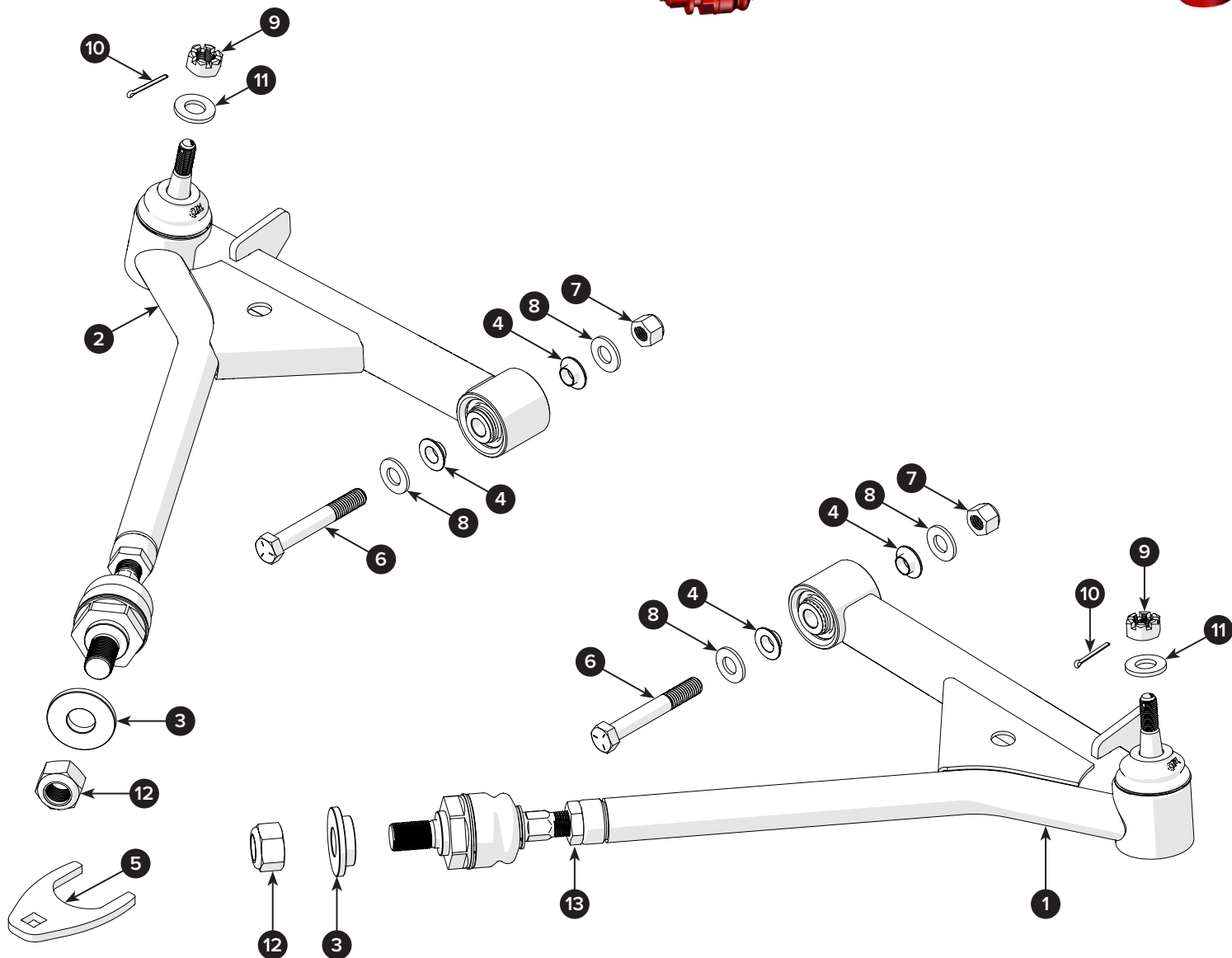
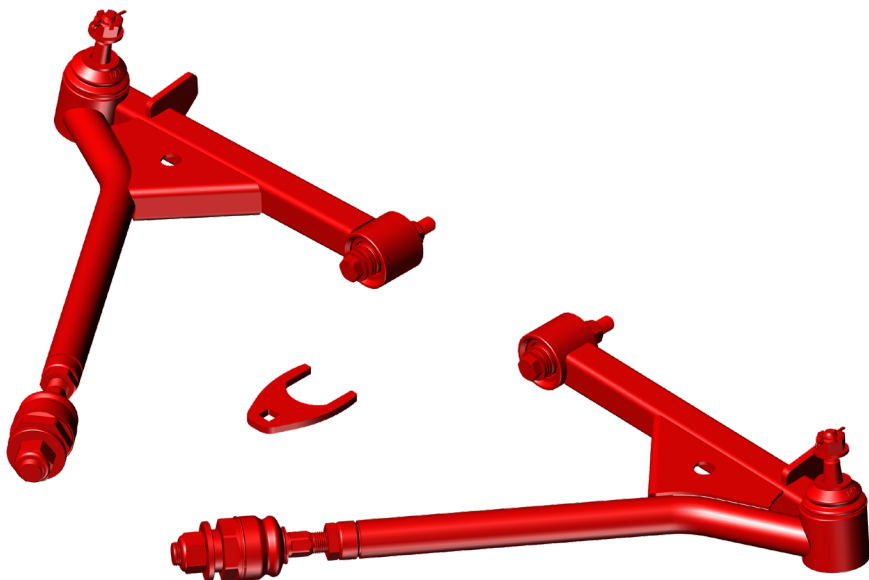
FACTORY LCA REMOVAL 8

INSTALLATION12

ALIGNMENT ADJUSTMENT15

WARRANTY.....16

52702 64-66 FORD MUSTANG
LOWER CONTROL ARM KIT



52702 64-66 FORD MUSTANG LOWER CONTROL ARM w/INSTALL KIT 7039-487

POSITION	PART #	DESCRIPTION	QTY	TORQUE SPECIFICATION
1	7720-551	LOWER CONTROL ARM WELDMENT, LH	1	—
2	7720-552	LOWER CONTROL ARM WELDMENT, RH	1	—

64-70 FORD MUSTANG LOWER CONTROL ARM INSTALL KIT 7039-487 w/HARDWARE KIT 7039-480

POSITION	PART #	DESCRIPTION	QTY	TORQUE SPECIFICATION
3	9032-475	BUSHING WASHER, STRUT ROD, 20 mm ID	2	—
4	99030613	SPACER, STEPPED .055" WIDTH	4	—
5	99030634	WRENCH, 46 mm, 1/2" RATCHET DRIVE	1	—

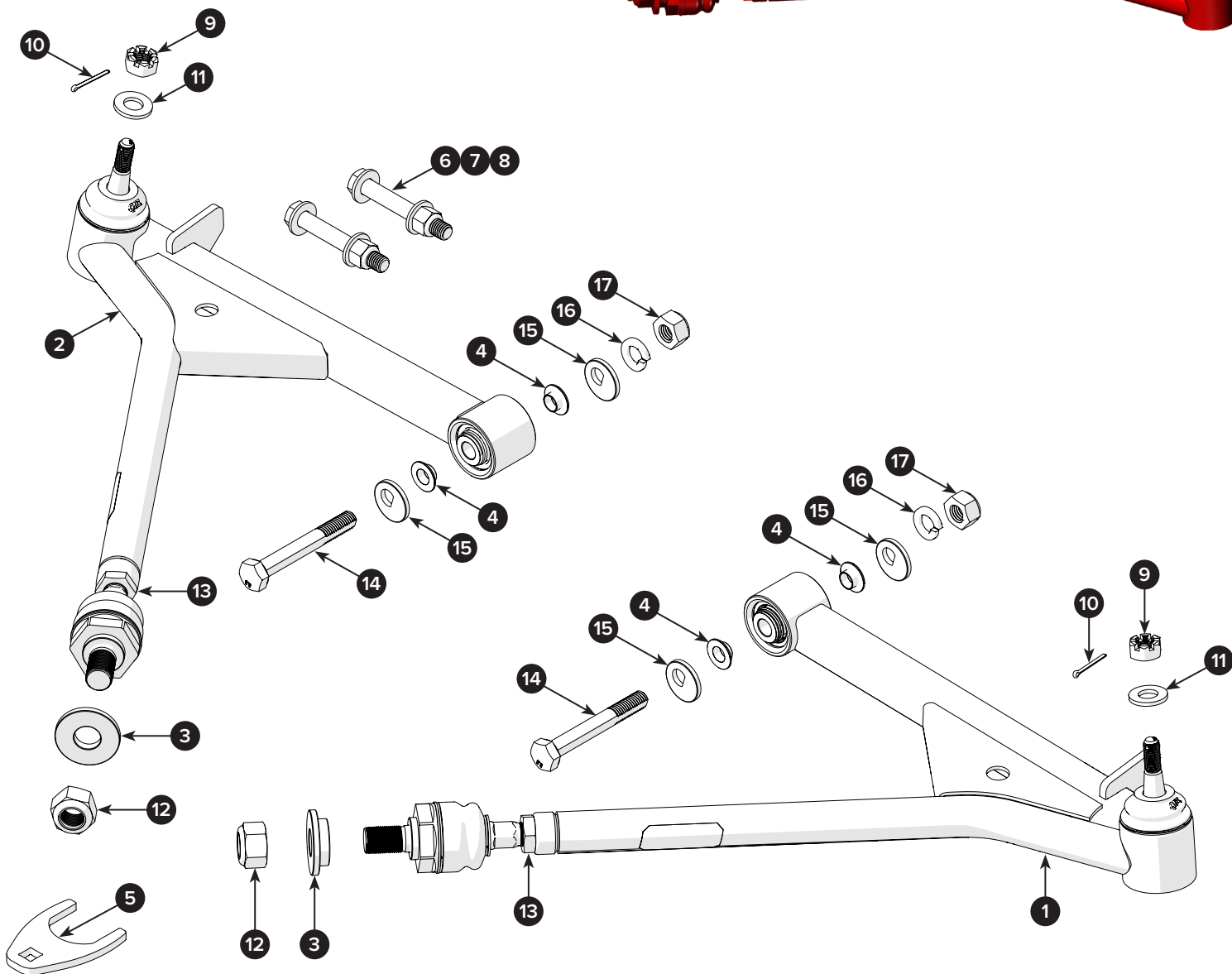
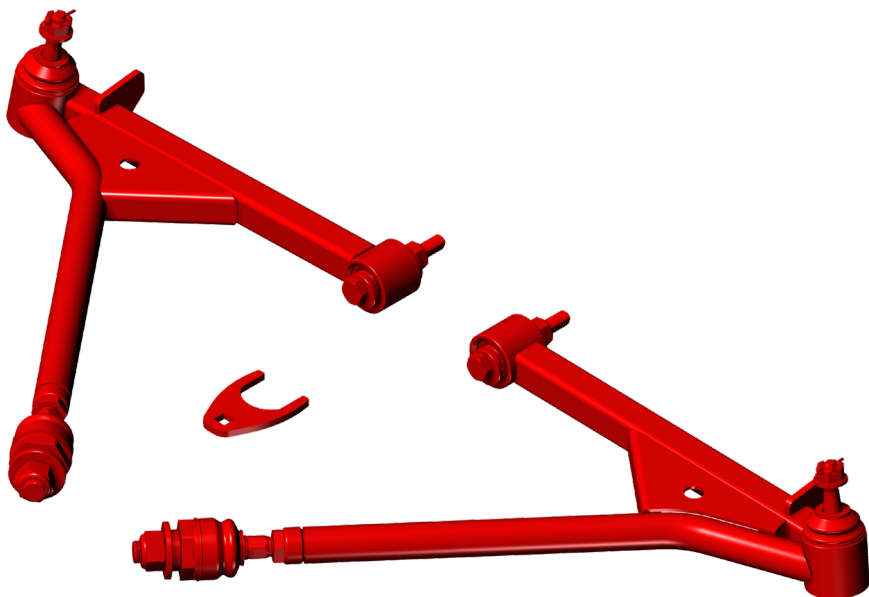
64-70 FORD MUSTANG LOWER CONTROL ARM HARDWARE KIT 7039-480

POSITION	PART #	DESCRIPTION	QTY	TORQUE SPECIFICATION
6	9012-271	BOLT, HEX 1/2-13 X 3.5"	2	—
7	9014-520	NUT, NYLOCK, 1/2-13	2	—
8	9005-228	WASHER, FLAT 1/2" SAE	4	—
9	9014-582	NUT, SLOTTED (CASTLE) 9/16-18	2	65 LB-FT
10	9035-172	PIN, COTTER 7/64" X 1-1/4"	2	—
11	9005-255	WASHER, FLAT 9/16" SAE	2	—
12	N/A	NUT, NYLOCK M20 X 1.5	2	180 LB-FT
13	MJNR18S-1	NUT, JAM, M18 x 1.5RH (PREASSEMBLED)	2	75 LB-FT

Note: The part positions listed above will be called out in this installation manual as a visual reference to their respective positions during the installation procedure. Refer to these pages during the installation. Count and compare all parts and fasteners to the list above. If parts are missing, contact QA1 at sales@qa1.net.



52704 67-70 FORD MUSTANG
LOWER CONTROL ARM KIT



52704 67-70 FORD MUSTANG LOWER CONTROL ARM w/INSTALL KIT 7039-487

POSITION	PART #	DESCRIPTION	QTY	TORQUE SPECIFICATION
1	7720-553	LOWER CONTROL ARM WELDMENT, LH	1	—
2	7720-554	LOWER CONTROL ARM WELDMENT, RH	1	—

67-70 FORD MUSTANG LOWER CONTROL ARM INSTALL KIT 7039-487 w/HARDWARE KIT 7039-480

POSITION	PART #	DESCRIPTION	QTY	TORQUE SPECIFICATION
3	9032-475	BUSHING WASHER, STRUT ROD, 20 mm ID	2	—
4	99030613	SPACER, STEPPED .055" WIDTH	4	—
5	99030634	WRENCH, 46 mm, 1/2" RATCHET DRIVE	1	—

64-70 FORD MUSTANG LOWER CONTROL ARM HARDWARE KIT 7039-480

POSITION	PART #	DESCRIPTION	QTY	TORQUE SPECIFICATION
6	9012-271	BOLT, HEX 1/2-13 X 3.5"	2	—
7	9014-520	NUT, NYLOCK, 1/2-13	2	—
8	9005-228	WASHER, FLAT 1/2" SAE	4	—
9	9014-582	NUT, SLOTTED (CASTLE) 9/16-18	2	65 LB-FT
10	9035-172	PIN, COTTER 7/64" X 1-1/4"	2	—
11	9005-255	WASHER, FLAT 9/16" SAE	2	—
12	N/A	NUT, NYLOCK M20 X 1.5	2	180 LB-FT
13	MJNR18S-1	NUT, JAM, M18 x 1.5RH (PREASSEMBLED)	2	75 LB-FT

67-70 FORD MUSTANG LOWER CONTROL ARM CAMBER KIT 120-10009

POSITION	PART #	DESCRIPTION	QTY	TORQUE SPECIFICATION
14	CAMBER KIT 120-10009	BOLT, CAM ALIGNMENT, 1/2"-20 x 4.25"	2	75 LB-FT
15		WASHER, CAM ALIGNMENT	4	—
16		LOCK WASHER, SPLIT, 1/2"	2	—
17		NUT, JAM, 1/2"-20	2	—

Note: The part positions listed above will be called out in this installation manual as a visual reference to their respective positions during the installation procedure. Refer to these pages during the installation. Count and compare all parts and fasteners to the list above. If parts are missing, contact QA1 at sales@qa1.net.

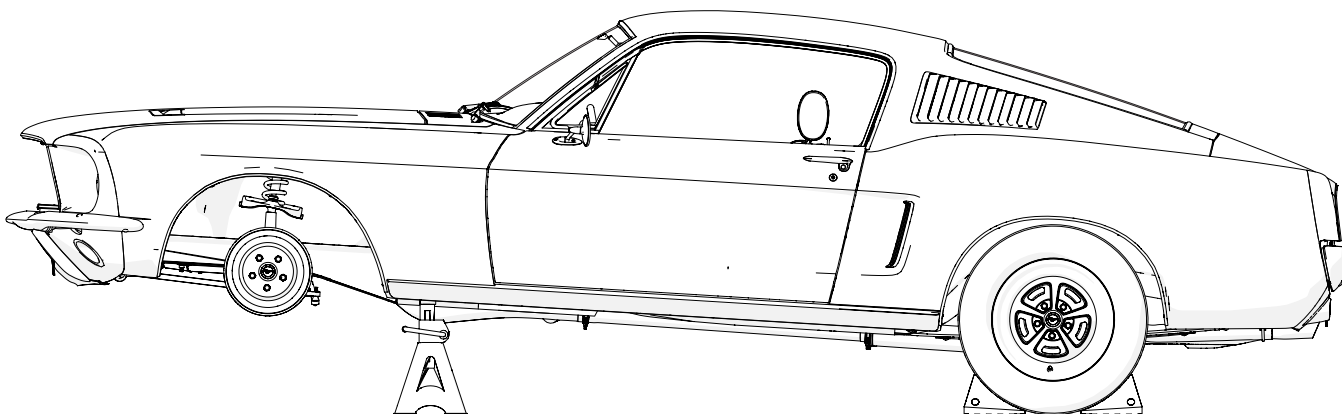
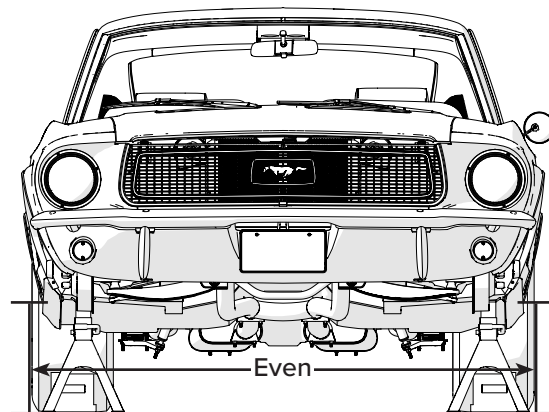


Installer's Note: The design of the QA1 lower control arm requires the use of only the QA1 sway bar in conjunction with these control arms.

This instruction set begins with the replacement procedure for the front driver's side of the vehicle. The process for replacing the passenger side lower control arm is identical.

- 1 Lift the front of the vehicle and evenly support it with jack stands.

Remove the lug nuts and wheels from both the left and right sides of the front of the vehicle for the QA1 lower control arm installation.

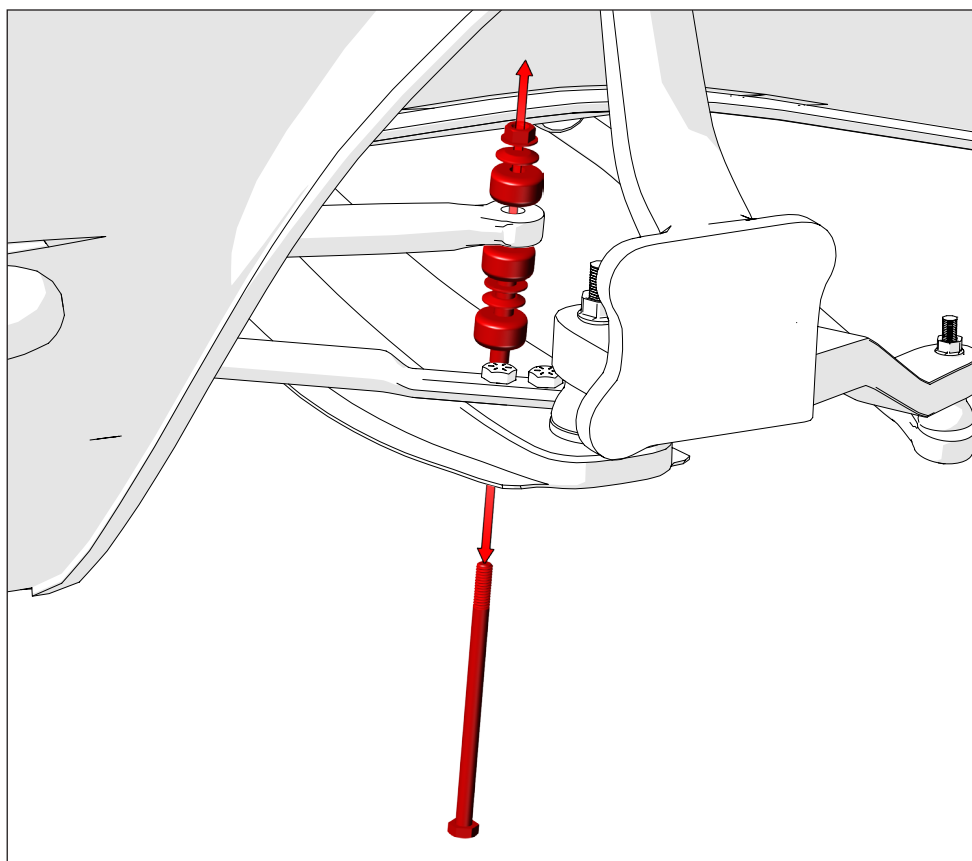


Installer's Note: From this point onward, the body and frame are only shown in these instructions when necessary.

- 2 The OE sway bar cannot be used with the QA1 lower control arm, so it must be removed.

First, remove the sway bar end link hardware and discard it, as it will not be reused.

Then, remove the hardware from the other end of the sway bar.



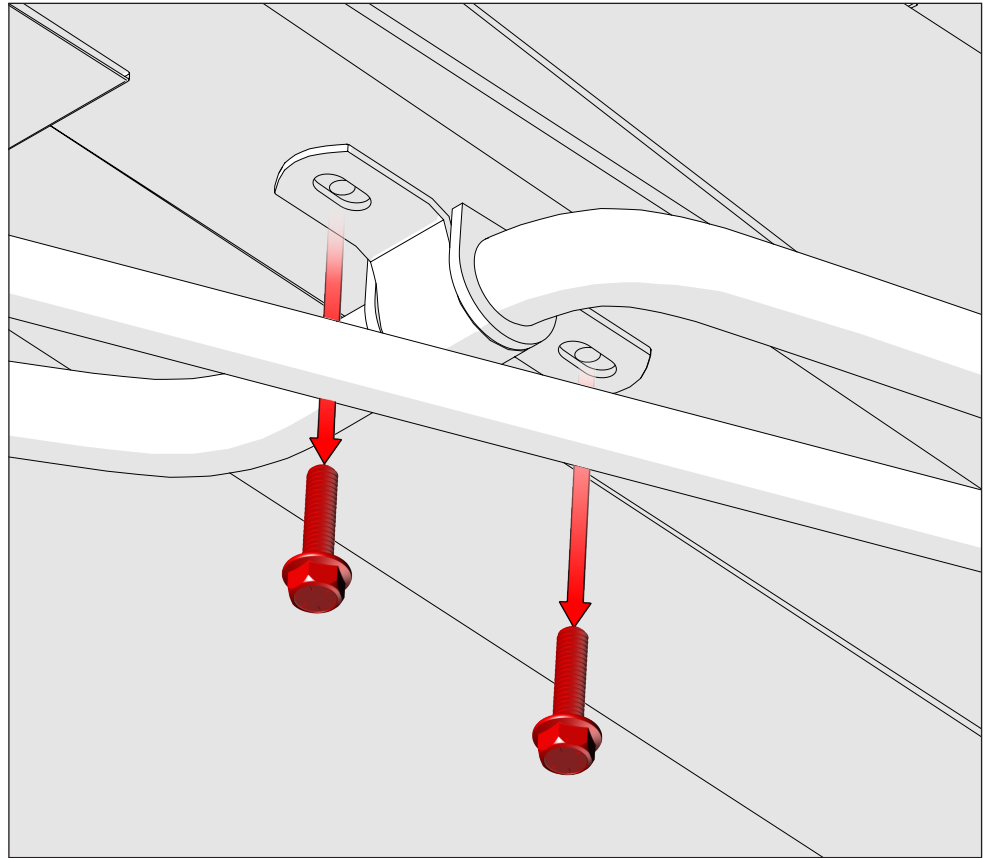
3

First, remove the bolts from the sway bar mounting bracket that is attached to the crossmember.

Discard the hardware, as it will not be reused.

Next, remove the hardware from the other sway bar mounting bracket.

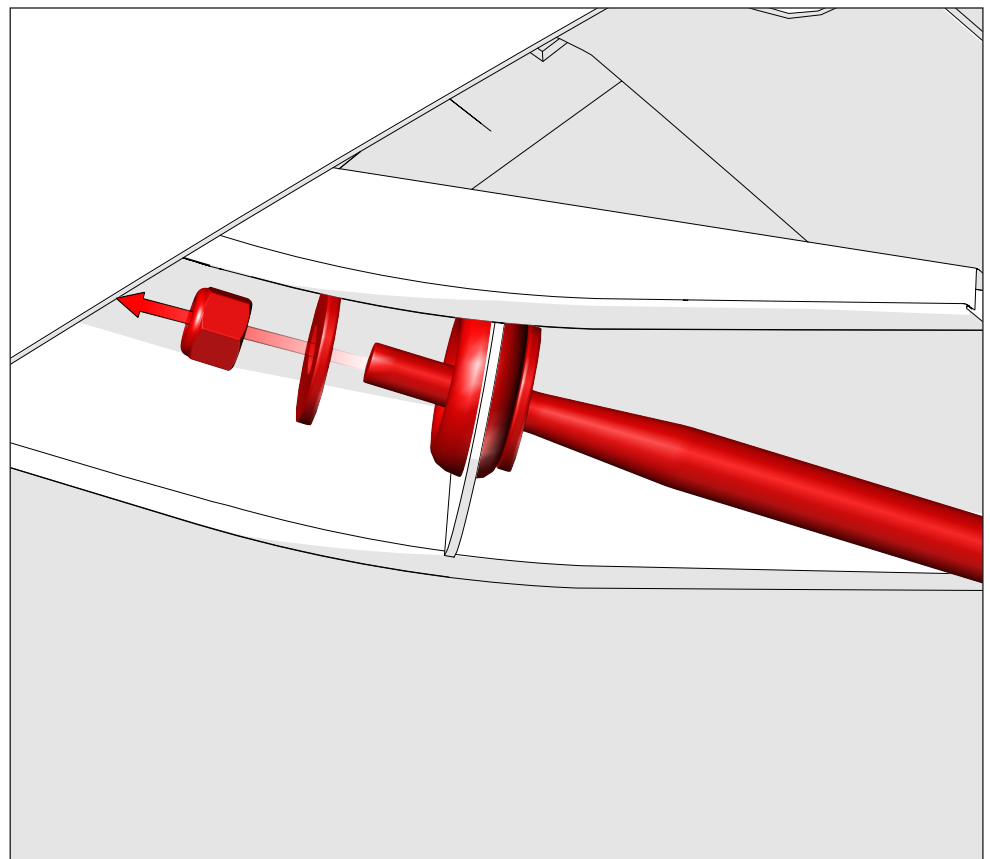
Note: The sway bar will drop suddenly once the mounting bracket hardware is removed. Take caution to avoid personal injury when the sway bar falls.



4

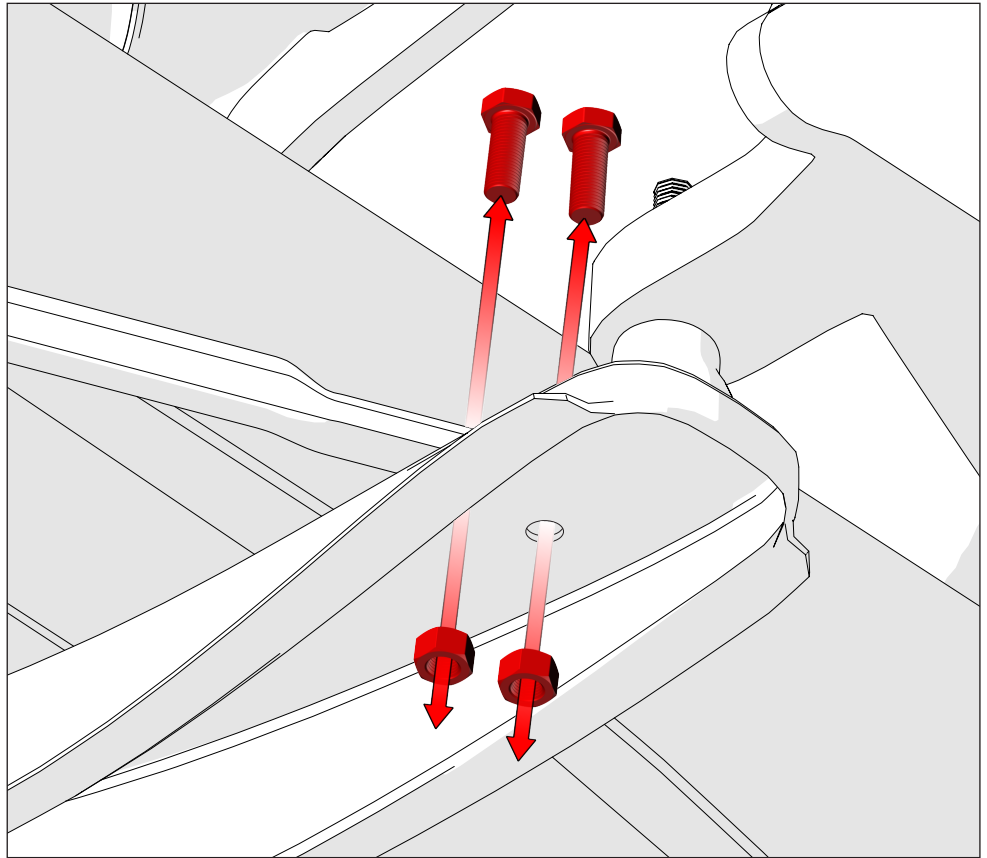
Remove the strut hardware from the front of the factory lower control arm.

Discard the hardware as it will not be reused.



- 5** Remove the strut hardware from the factory lower control arm.

Discard the hardware as it will not be reused.

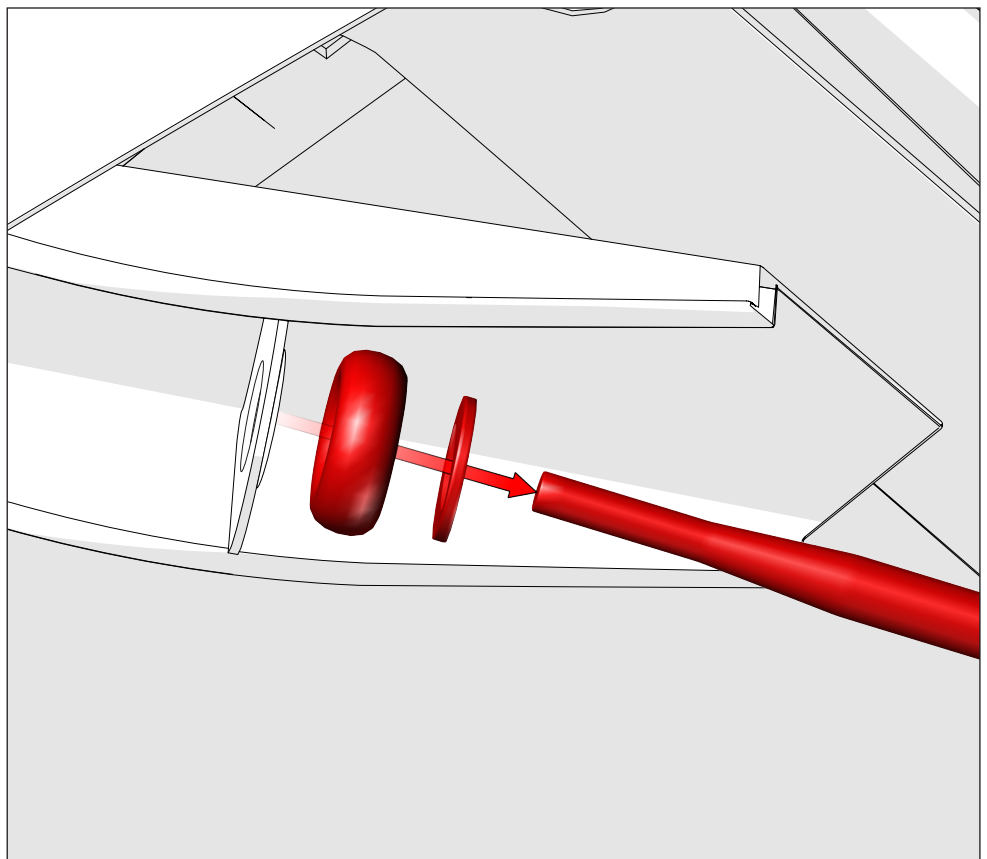


- 6** With all strut rod hardware now removed, slide the strut rod, washer, and any bushing material out from the strut rod mount's hole.

Discard the strut rod and hardware, as it will not be reused.

A metal sleeve will be pressed into the front factory strut rod mount. It must be removed. Use a suitable tool to remove it.

Remove any corrosion or rust on the mount. Prep and paint the mount to prevent possible future rust.

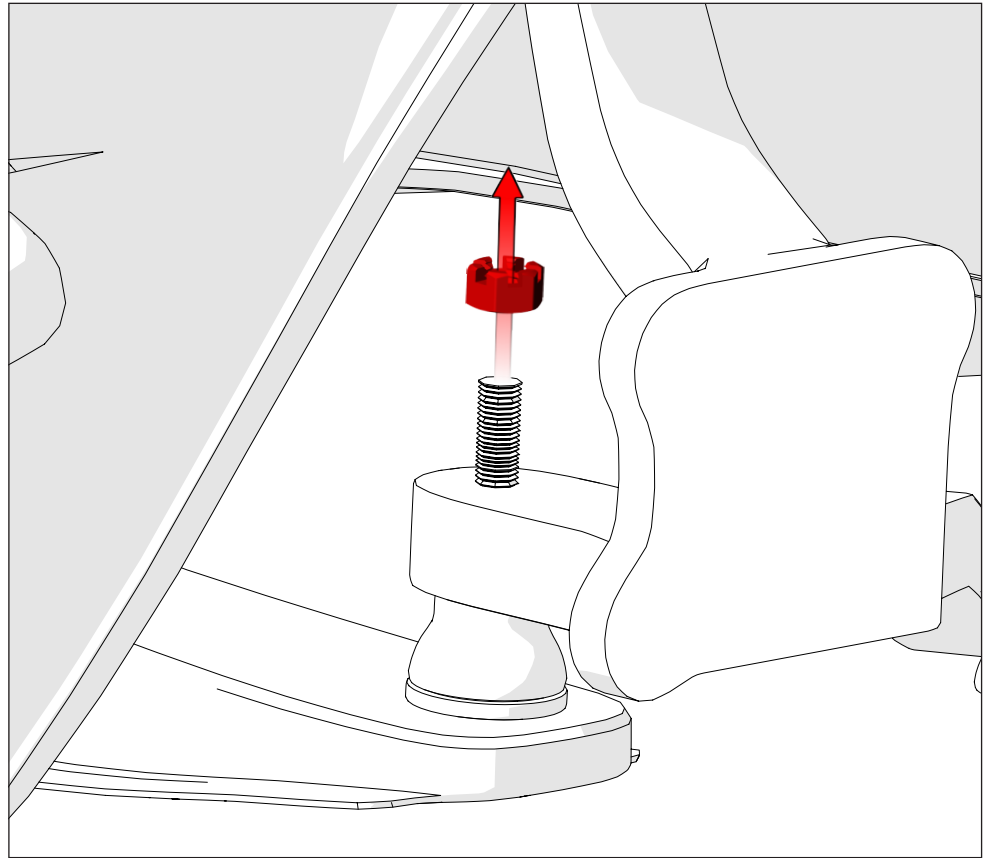


7

First, remove the cotter pin and castle nut from the ball joint.

Then, use an appropriate tool and separate the ball joint from the steering knuckle, and let the lower control arm droop down.

Discard the hardware as it will not be reused.



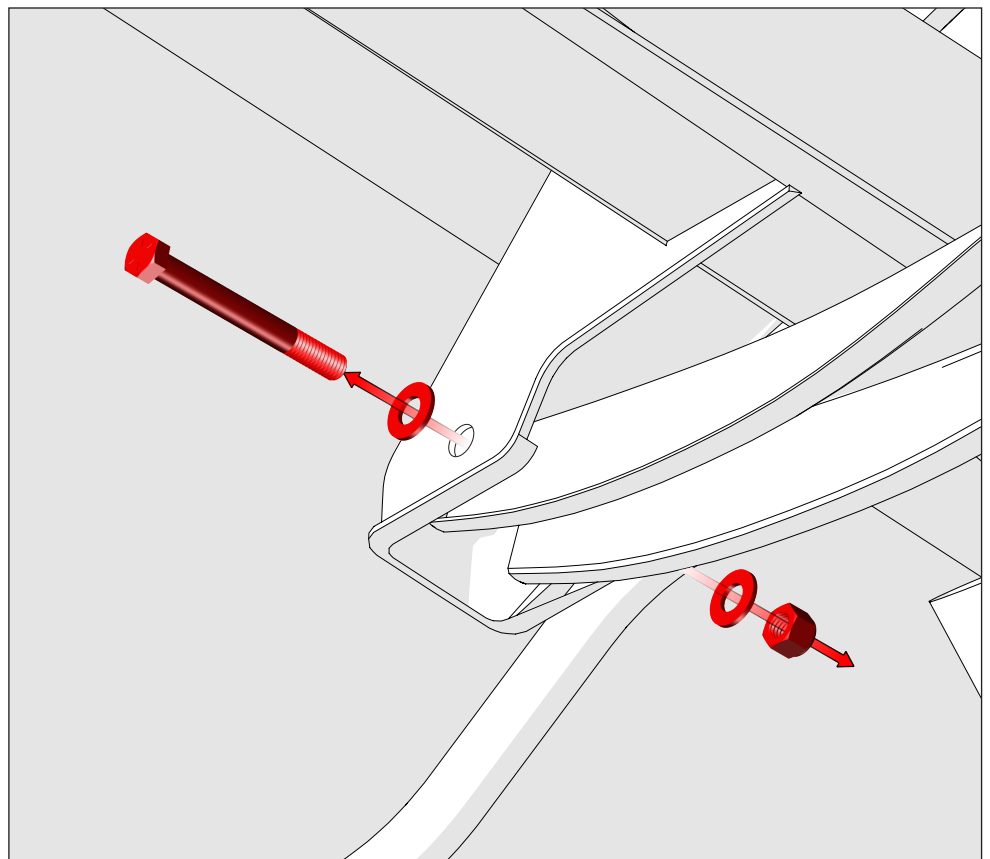
8

Remove the pivot hardware from the inside of the trailing arm.

Discard the hardware as it will not be reused.

Finally, remove and discard the lower control arm.

Repeat steps 4 through 8 to remove the lower control arm on the passenger side.

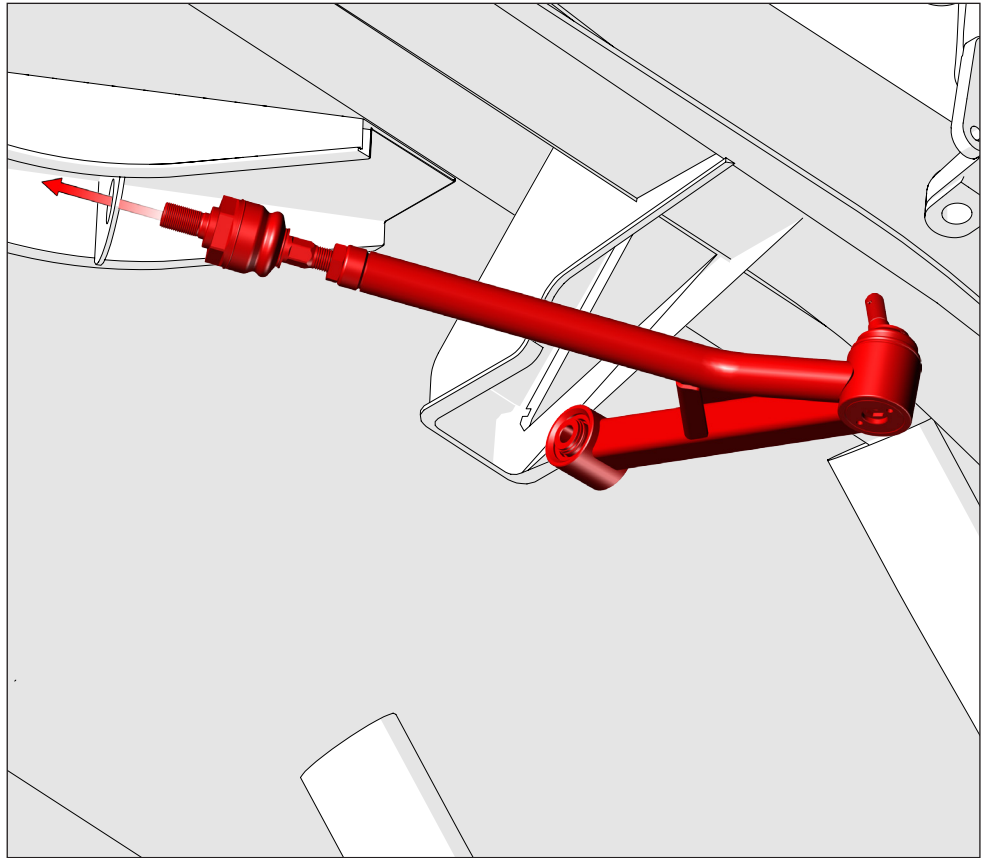


Installer's Note: These instructions show the QA1 Lower Control Arm kit (52704) and camber hardware kit (120-10009) for the 1967-1970 Mustang.

The LCA kit 52702 for the 1964-1966 Mustang has the same installation process but uses different pivot mount hardware.

9

Install the QA1 LH lower control arm (1) axial ball joint into the frame's strut rod mount.

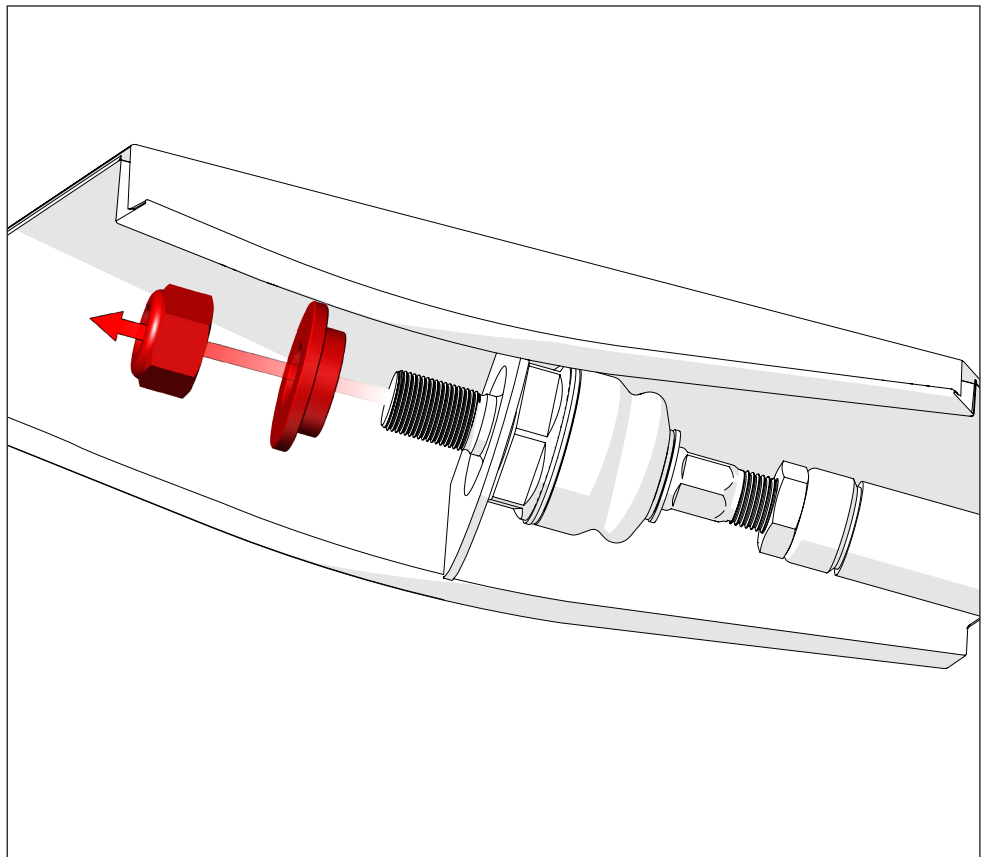


10

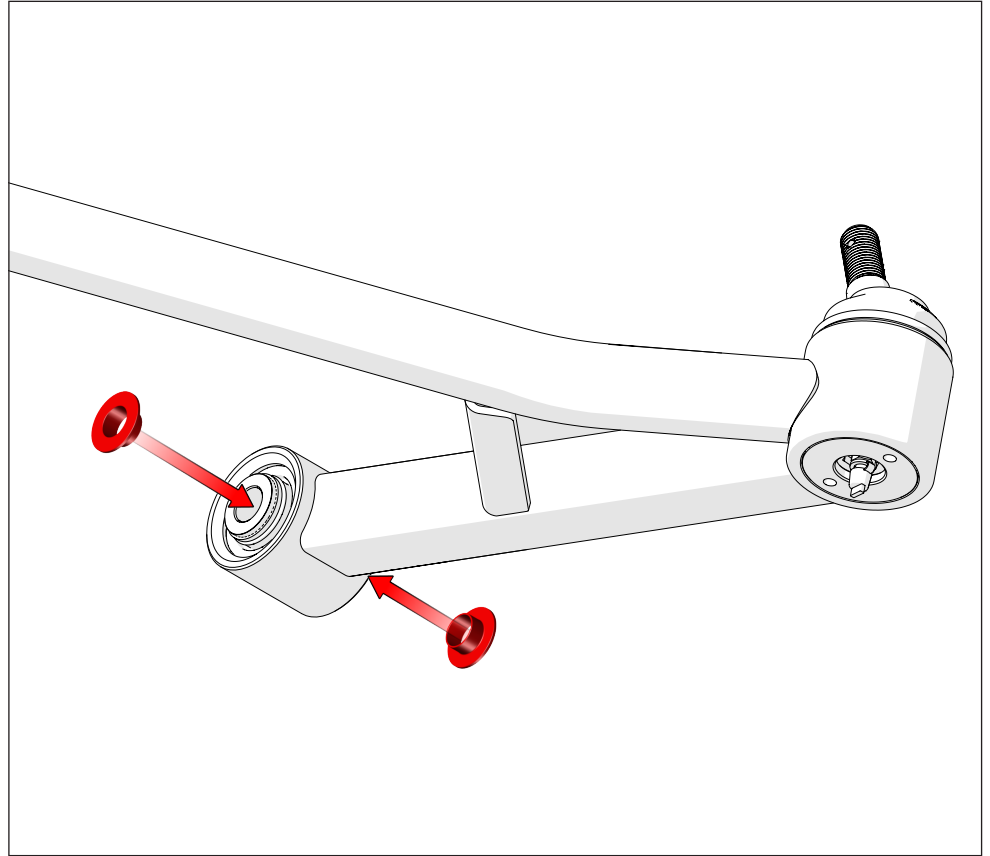
Put a strut rod bushing washer (3) onto the axial ball joint stud and make sure it fits into the hole in the strut rod mount.

Attach the strut rod with one M20 Nylock nut (12).

Note: Leave the nut loose for now. It will be torqued to specification during step 14.



- 11** Put one stepped spacer (4) into each side of the pivot bushing.



Installer's Note: These instructions show the installation of the 67-70 Mustang cam alignment hardware. The 64-66 Mustang uses the same installation process with different pivot hardware.

- 12** Put the LCA pivot bushing into the control arm pocket on the frame.

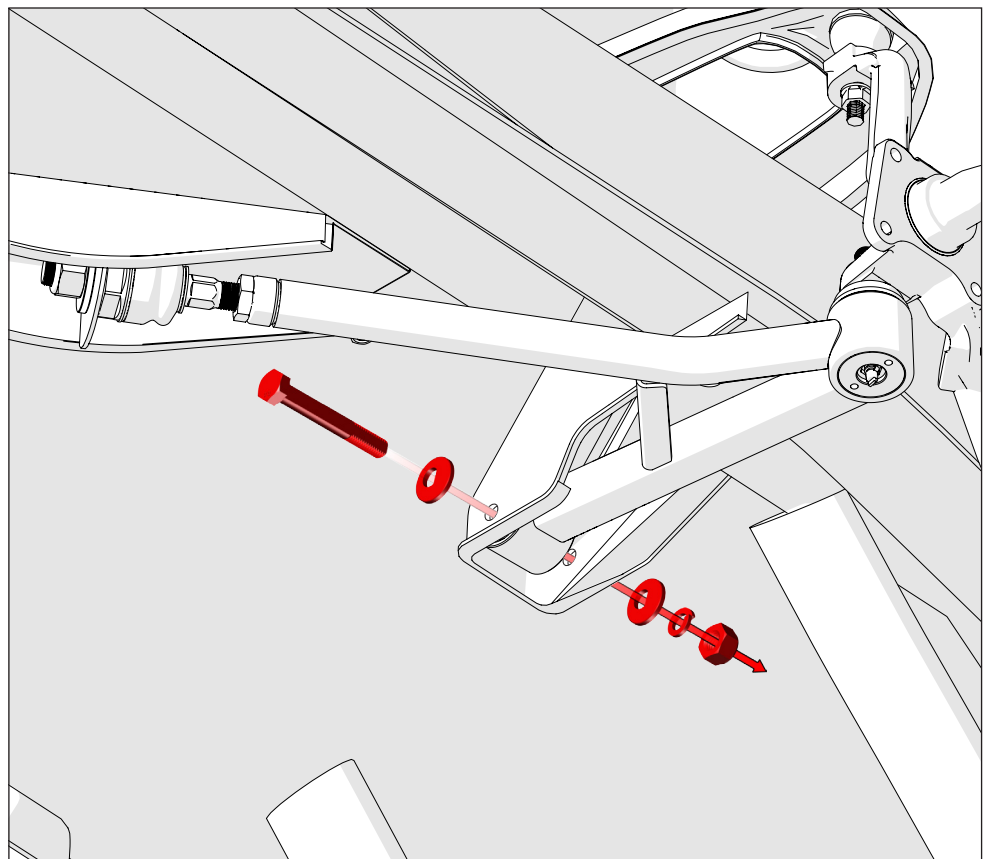
For 67-70 Mustangs:

Attach the LCA pivot to the frame with one 1/2" x 4.25" cam alignment bolt (14), two 1/2" cam alignment washers (15), one split lock washer (16), and one 1/2" Nylock nut (17).

For 64-66 Mustangs:

Attach the LCA pivot to the frame with one 1/2" x 3.5" hex bolt (6), two 1/2" flat washers (8), and one 1/2" Nylock nut (7).

Note: Leave the bolt loose for now. It will be torqued to specification during step 14.

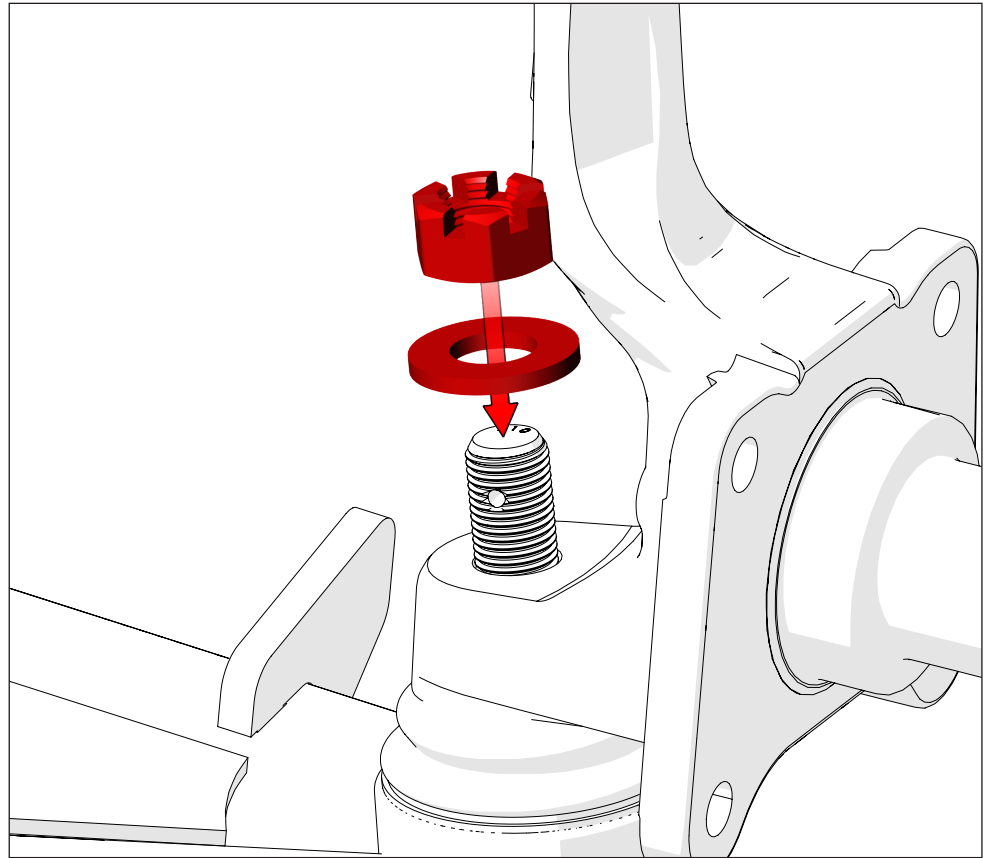


- 13** Put the LCA ball joint into the steering knuckle.

Use one 9/16" flat washer (11) and one slotted castle nut (9) to attach the ball joint to the knuckle.

Torque the nut to 65 lb-ft.

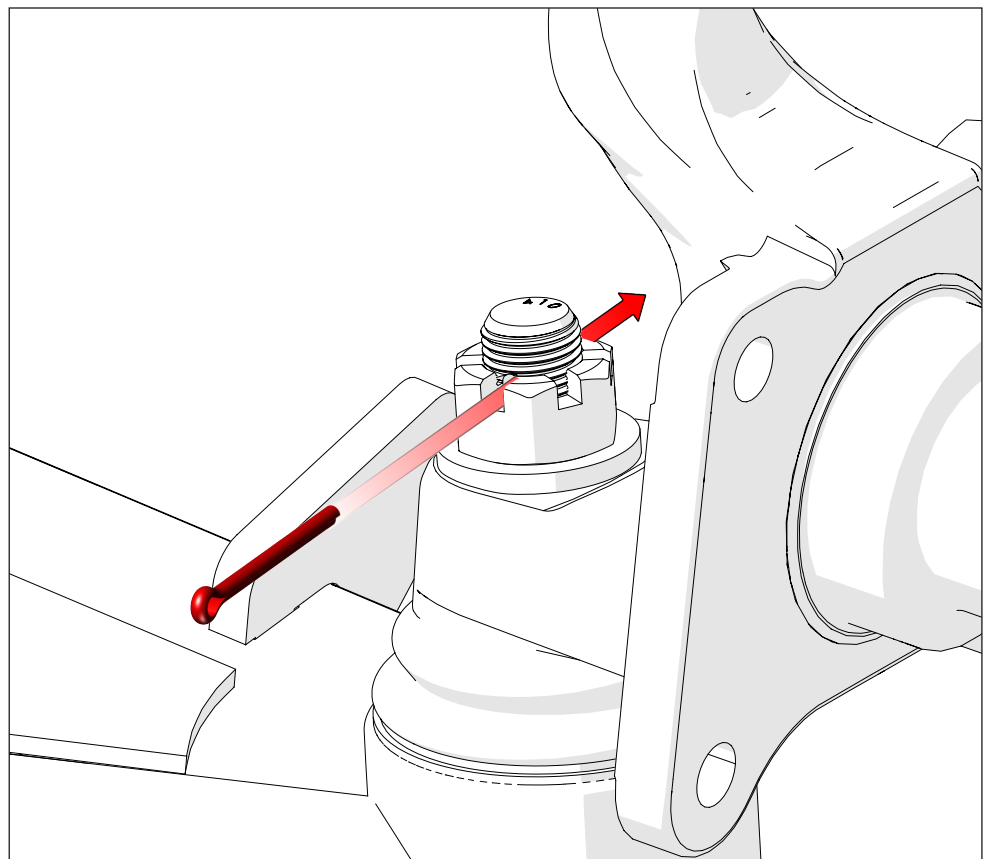
Note: If the notches on the castle nut do not line up with the cotter pin hole, tighten the nut to the next available position. Do not loosen the nut to align the cotter pin hole!



- 14** Put a cotter pin (10) into the nut and through the ball joint stud. Bend the ends of the cotter pin to keep it in position.

Then, refer to steps 12 and 10 to torque the pivot bolt to 65 lb-ft., and the strut rod nut to 180 lb-ft.

Finally, repeat steps 9 through 14 to assemble the RH (passenger side) lower control arm to the vehicle.



Installer's Note: The QA1 upper and lower control arms are designed to increase both caster and negative camber.

It is essential to inform the alignment shop of this modification since they typically align vehicles to factory specifications.

15

Finally, align the vehicle according to QA1's specifications.

These alignment specifications apply specifically to 64-66 and 67-70 Mustangs equipped with QA1 upper and lower control arms.

The QA1 LCAs come assembled and set to a factory specification, but they are adjustable.

64-66 Mustang: Only the LCA's front axial ball joint is adjustable. The jam nut (13) must be torqued to 75 lb-ft once adjustments have been completed.

67-70 Mustang: LCAs are adjusted at the axial ball joint and with the use of camber bolts at the pivot bushing. The jam nut (13) and camber bolt must each be torqued to 75 lb-ft once adjustments have been completed.

Note: Vehicles with different control arm configurations may not be able to meet these alignment standards.

1964-1970 FORD MUSTANG ALIGNMENT SPECIFICATIONS

CASTER		CAMBER	TOE	
3° MIN*	5° MAX	0.5° ± 0.5°	0.10° MIN	.30° MAX

*3° is the recommended caster setting for Mustangs with manual steering.



DISCLAIMER / WARRANTY

QA1 warrants the products to be free from defects in material and workmanship for one year from the date of sale to the original purchaser. QA1 makes no other warranty of any kind, expressed or implied.

QA1 shall have no obligation under the preceding warranty where the defect results from improper or abnormal use, your negligence, vehicle accident, inappropriate or incorrect installation or maintenance, nor when the product has been repaired or altered in any way. QA1's liability in the case of defective products subject to the preceding warranty shall be limited to the repair or replacement of the defective products at QA1's option.

The user understands and recognizes that racing parts, specialized street rod equipment, and all parts and services sold by QA1 are exposed to many varied conditions due to the manner in which they are installed and used. It is the user's responsibility to determine the proper use or application of QA1 products.

QA1 shall bear no liability for any loss, damage, or injury, either to a person or to property, resulting from the installation, direct or indirect use of any QA1 products, or inability by the buyer to determine proper use or application of QA1 products. With the exception of the limited liability warranty set forth above, QA1 shall not be liable for any claims, demands, injuries, damages, actions, or causes of action to the buyer arising out of or connected with using any QA1 products.

Motorsports are inherently risky; therefore, no warranty or representation is made as to the product's ability to protect the user from injury or death. The user is fully aware and assumes that risk.



This page left intentionally blank

